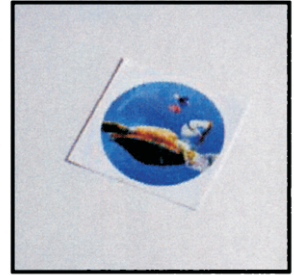


EASY DOME manual

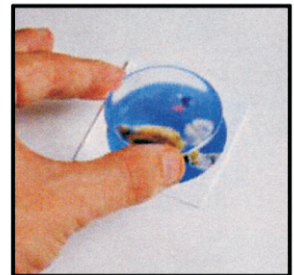
EASY DOME is very simple!

Print and cut your label.
Let them breathe for 48 hours.

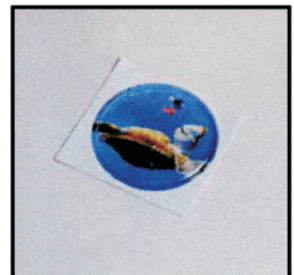


Place the **DOME** above the label and let it drop.

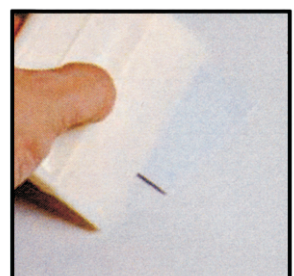
DO NOT PRESS!



Let it sit for 3 seconds.



Turn the **DOME** around and rub it from the inside out. The enclosed air shell disappear!



Your **EASY DOME** is ready.

